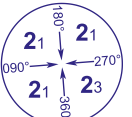


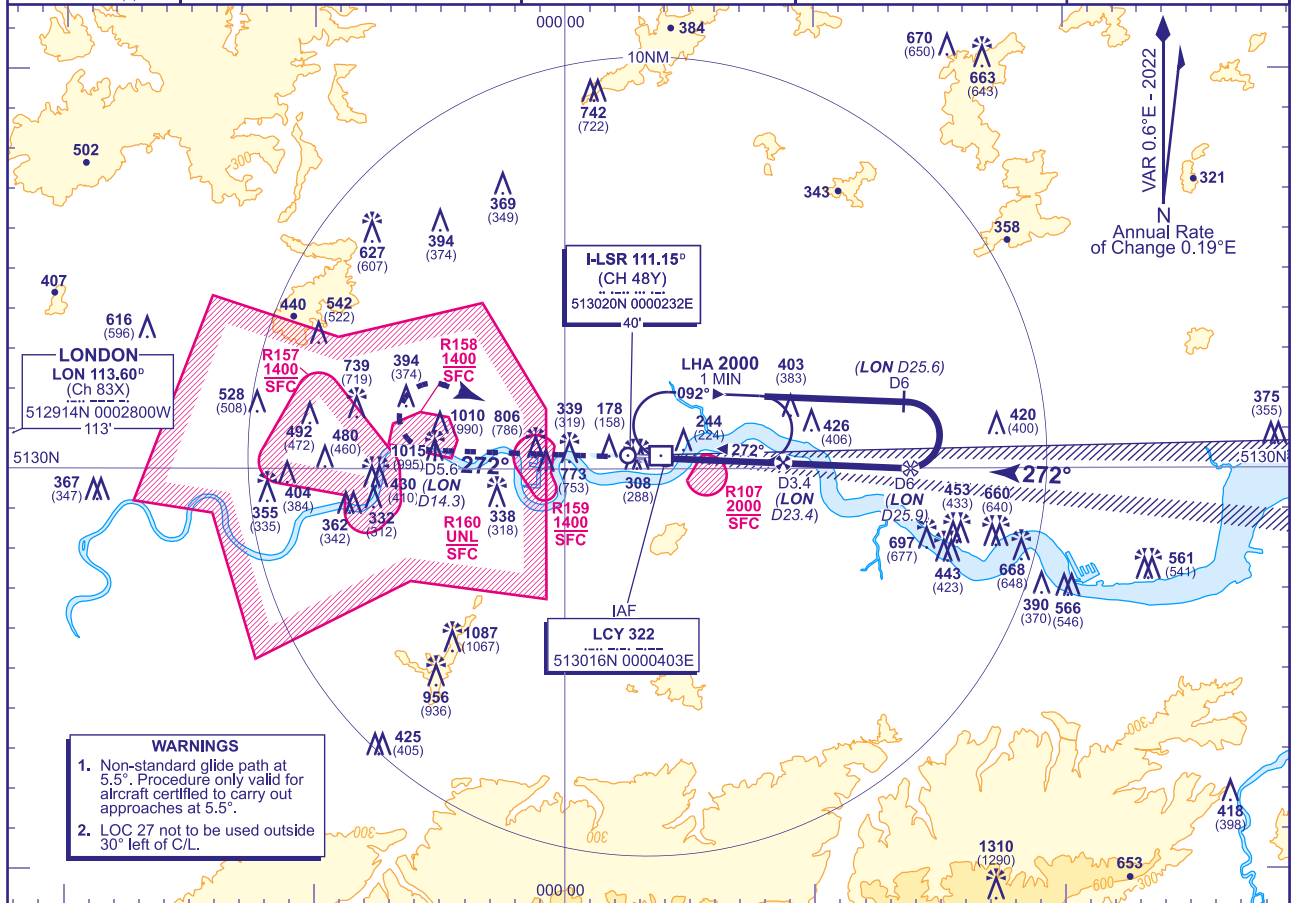
INSTRUMENT APPROACH CHART - ICAO

LONDON CITY

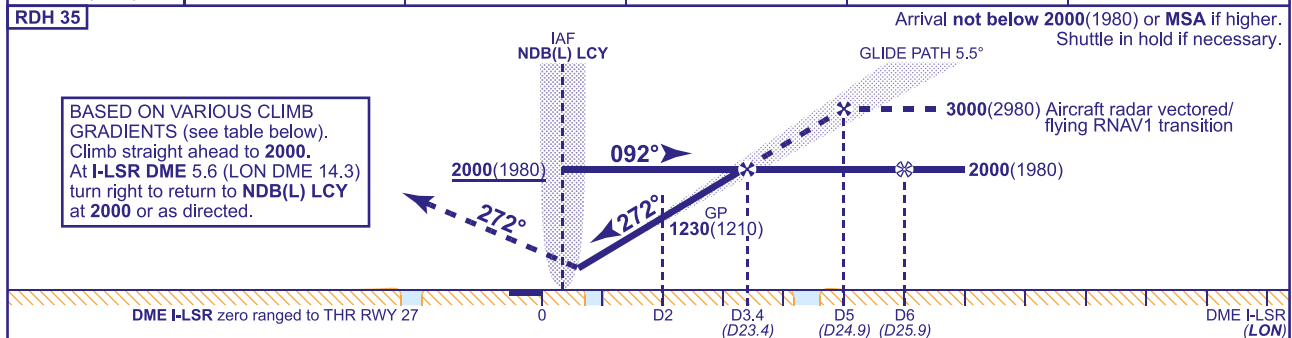
ILS(5.5°GP)/
DME/NDB(L)
RWY 27

(ACFT CAT A,B,C)

 MSA 25NM NDB(L) LCY	APP 132.700	THAMES DIRECTOR	AD ELEVATION 20	TRANSITION ALTITUDE 6000
	TWR 118.080, 129.455	CITY TOWER	THR ELEVATION 20	
	RAD 133.455, 128.025	THAMES DIRECTOR	OBSTACLE ELEVATION 1310 AMSL (1290) (ABOVE THR)	
	ATIS 136.355	CITY INFORMATION	BEARINGS ARE MAGNETIC	



RECOMMENDED PROFILE GLIDE PATH 5.5°, 585FT/NM					
DME I-LSR(LON)	3.4(23.4)	3.0(23.0)	2.5(22.5)	2.0(22.0)	1.0(21.0)
ALT(HGT)	2000(1980)	1820(1800)	1520(1500)	1230(1210)	650(630)



DME I-LSR zero ranged to THR RWY 27						DME I-LSR (LON)					
Aircraft Category						Rate of descent					
A						G/S KT					
B						FT/MIN					
C						160					
BAe 146						140					
CLIMB GRAD 2.5%						120					
CLIMB GRAD 3.0%						100					
CLIMB GRAD 4.0%						80					
VM(C)OCA (OCH AAL)						NOT APPLICABLE					

RADAR VECTORIZING/RNAV1 TRANSITION
Aircraft will normally be radar vectored/positioned to the LOC by Thames Director to be established on the LOC no later than I-LSR DME 6.

CHANGE (10/24): I-LSR DME ELEVATION.

AERO INFO DATE 23 JUL 24

AD 2-EGLC-8-4